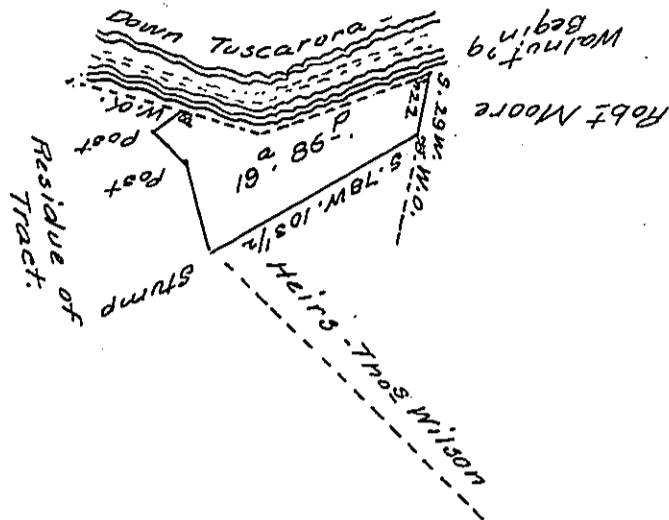


Beginning at a Walnut on bank -
Creek. Cours- & Distance

- S. 29 W. 22 a. W.O.
- S. 78 W. 103 1/4 Stump
- N. 1 E. 31 3/8 Post
- N. 12 1/2 W. 24 Post
- N. 66 E. 6 a. W.O.

on-bank-Tuscarora Creek
thence Down same S. 59 E. 40 1/2
& N. 87 E. 76 1/2 to the place of
Begin'g

Total Down-Creek 117-



A Draught of Nineteen acres and 86 perches and the allowance of six
P^t Cent for Roads &c.

Part of a larger Tract of Land situate in Milford Township (formerly
Cumberland now) Mifflin County Survey^d the 6th day of June 1763 and said to
contain 431 3/4 acres and the allow^{ce} &c. In pursuance of two Warrants
one in the name of Richard Franklin Dated the 4th day of February 1755
the other in the name of John Hunter Dated the 1st day of April 1755

Divided the 11th day of April 1801.

Note the above 19^a 86 P^t is also a part of 219^a 83 P^t &c.
now the property of Laurance King.

P^t William Harris, D. S.

To Samuel Cochran, Esquire,

Surv^r Gen^l of Pennsylvania.

IN TESTIMONY that the above is a copy of the original remaining on file in
the Department of Internal Affairs of Pennsylvania, made
conformably to an Act of Assembly approved the 16th day of
February, 1833, I have hereunto set my Hand and caused
the Seal of said Department to be affixed at Harrisburg,
this fifteenth day of June 1906.

Isaac R. Brown
Secretary of Internal Affairs